

**The BMW D150W Marine Engine with reversing-type gearbox: 100 kW (136 bhp). Particularly suitable for displacement boats and fast planing cruisers through its compact dimensions and extremely low weight: 60 kg/132 lb less than most of its competitors.**

This turbocharged diesel also excels with its exceptional combination of technical features: 6 cylinders inline for particular smooth running free of vibrations. Turbocharging to provide powerful torque and flexibility at all engine speeds. Twin-circuit cooling fitted as standard for better corrosion-proofing and freedom of maintenance. Weight including gearbox 402 kg (885 lb).

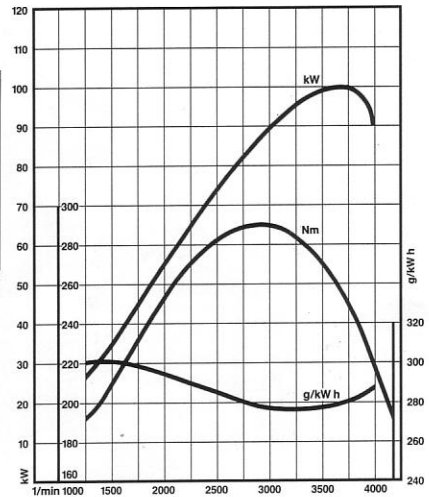
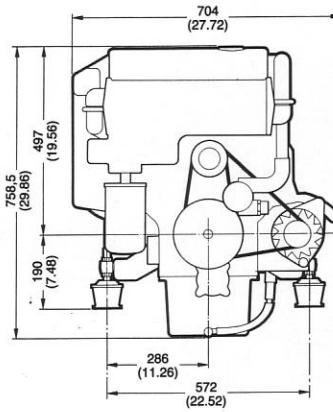
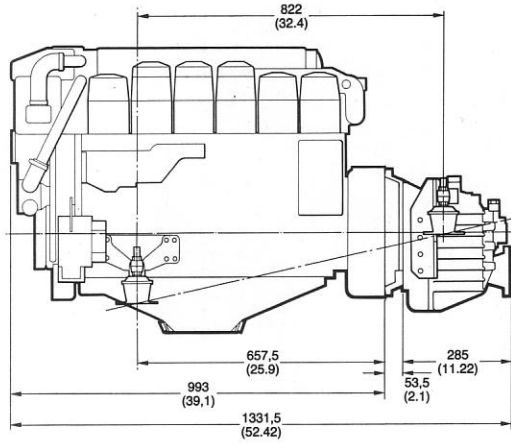
**Special features:**

- One piece crankcase of cast iron built to the "tunnel" design, with transverse sections. Giving maximum stability and low weight
- 6 individual lightweight aluminium cylinder heads: better sealing properties with easy inexpensive maintenance
- Very quiet exhaust gas turbo-charger providing a smooth power curve throughout a wide engine speed range
- Extra-large air filter for fresh air and a low noise level
- Water jacketed exhaust manifold made of V4A stainless steel
- Bosch distributor-type fuel injection pump with fuel supply geared to turbocharger pressure, maximum efficiency, improved fuel economy and considerably reduced exhaust emissions. Efficient combustion to provide optimum running smoothness free of vibrations
- All fuel pipes made of steel for maximum safety
- Compact twin-circuit cooling system with integrated header tank, heat exchanger and thermostat, oil cooler and thermostat

- Maintenance-free direct drive salt water pump by the camshaft and single-belt drive of the circulation pump and alternator by the crankshaft
- Extra pulley for driving additional components
- Complete corrosion-proofing by the application of a special two-component paintwork in the advance and main painting process

**Conclusion:**

The D 150 W has a wide range of exceptional advantages. This applies not only to the D 150 W but to all marine engines that bear the symbol of progressive engineering. BMW's complete range of marine engines for motor yachts and sailing boats offers all kinds of options and a wide choice of diesel and petrol units. You can choose from a wide range of optional extras and accessories to meet your personal requirements. And to make sure that you enjoy sheer boating pleasure for a long time to come, BMW Marine's international dealer organization has trained marine technicians at your service as well as a reliable and quick supply of parts.



## Specifications D 150 W

|   |   |
|---|---|
| <b>Displacement and output (DIN 6270 B)</b> | Displacement 3590 cc (219 cu in)<br>Stroke 90 mm (3.54"), bore 92 mm (3.62")<br>Max output 100 kW (136 bhp) at 3800 rpm<br>Torque 290 Nm (214 ft/lb) at 3000 rpm<br>Wide-open throttle neutral 4350 rpm<br>Compression ratio 21:1   |
| <b>Design and installation</b>              | Four-stroke diesel engine with water-cooled exhaust turbocharger<br>6 cylinders inline with aluminium cylinder heads<br>Forged, heat-treated steel crankshaft<br>Four-point mounting, adjustable at front and rear. Side to side adjustment as well   |
| <b>Weight</b>                               | Dry weight of engine 376 kg (827 lb), weight of complete drive unit 402 kg (885 lb)   |
| <b>Valves</b>                               | Camshaft, tappet rods and rocker arms located next to engine block; inclined valves in parallel arrangement   |
| <b>Lubrication</b>                          | Forced-feed lubrication by Eaton pump, replaceable oil filter, thermostat-controlled oil cooler   |
| <b>Fuel supply system</b>                   | Bosch fuel injection pump<br>Fuel supply pump with additional manual control<br>Ultra-fine filters with water separator<br>Air filters  |
| <b>Engine cooling</b>                       | Twin-circuit cooling system with water-cooled exhaust   |
| <b>Electrical system</b>                    | Motorola 1000 W, 14 V, 75 A alternator<br>Bosch 12 V, 3 kW starter<br>Electrical engine cut-off<br>Glow plugs with automatic glow time control  |
| <b>Power transmission</b>                   | Torsion damper  |
| <b>Reversing-type gearbox</b>               | Standard: forwards 1.6:1; reverse 1.6:1<br>Other reduction ratios on request  |
| <b>Standard fittings</b>                    | Engine with complete wiring and multi-pin plug connections, 6-m wiring harness; instrument panel with rev counter, hour meter, water and oil temperature gauge, voltmeter, indicator lamps for oil pressure, glow control and battery charge; warning buzzer for oil and water temperature; adjustable instrument illumination, 3-position starter/ignition switch; fuses for starter and instrument illumination; oil extraction pump fitted on engine as standard feature; salt water filter including all connection pieces and hoses; toolkit |
| <b>Optional fittings</b>                    | Single-lever gear shift and throttle control with cables; propeller; steering system; various additional instruments<br>Subject to change in design and technical features  |

Your BMW Marine Dealer:

